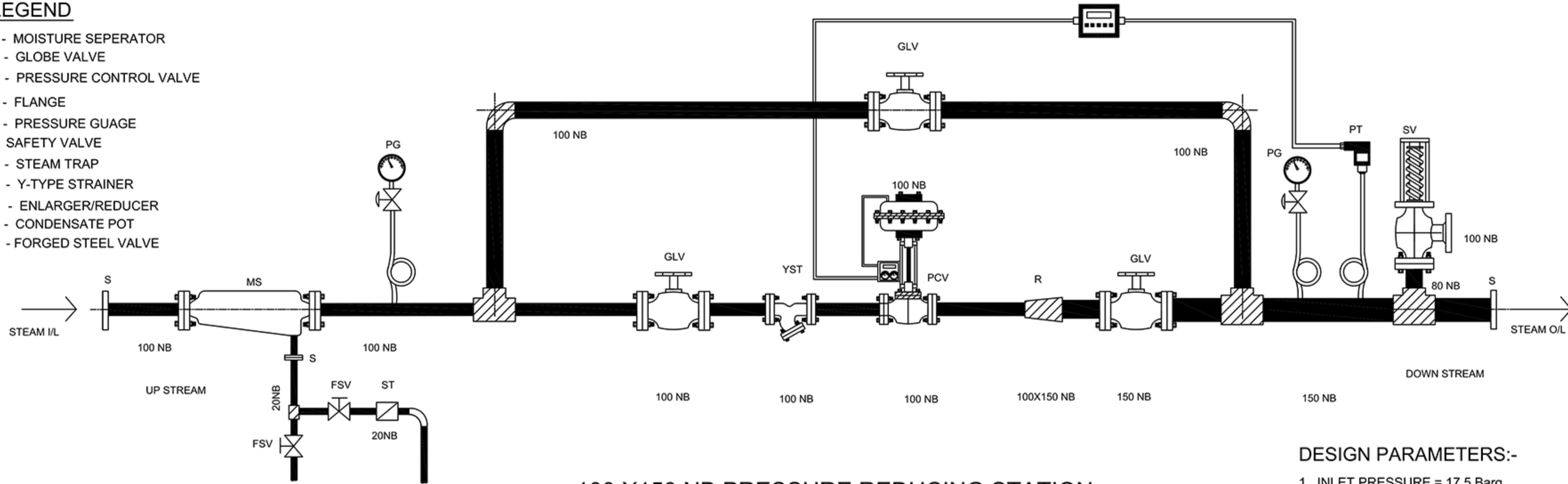


LEGEND

- MS - MOISTURE SEPERATOR
- GLV - GLOBE VALVE
- PCV - PRESSURE CONTROL VALVE
- S - FLANGE
- PG - PRESSURE GUAGE
- SV - SAFETY VALVE
- ST - STEAM TRAP
- YST - Y-TYPE STRAINER
- R - ENLARGER/REDUCER
- PT - CONDENSATE POT
- FSV - FORGED STEEL VALVE



100 X 150 NB PRESSURE REDUCING STATION

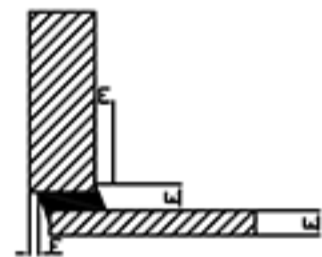
DESIGN PARAMETERS:-

1. INLET PRESSURE = 17.5 Barg
2. OUTLET PRESSURE = 12.5 Barg

MAXIMUM STEAM FLOW: 6000 Kg/Hr

DETAILS OF BENDS

DIAMETER OF PIPE	R	D
25	76.2	33.4
40	114.3	48.3
80	228.6	88.9
100	304.6	114.5



PIPE TO FLANGE WELD

DIAMETER OF PIPE	B	C	E	T	F
25	3.38	2.54	5.07	3.38	1.59
50	3.91	2.54	5.87	3.91	1.59
65	5.16	2.54	7.74	5.16	1.59
80	5.46	2.54	8.19	5.46	1.59
100	6.02	2.54	9.03	6.02	1.59

DETAILS OF FLANGES

DIAMETER OF PIPE	DIAMETER FLANGE CIRCLE	DIAMETER BOLT CIRCLE	NO OF BOLTS	DIAMETER OF BOLTS	THICKNESS OF FLANGE
25	120.65	87.31	4	16	14.28
50	165.10	127.00	4	16	19.05
65	184.15	146.05	4	16	19.05
80	203.20	165.10	4	16	22.23
100	228.60	190.50	8	16	25.40

BILL OF MATERIAL:-

S.NO	ITEM DESCRIPTION	SIZE	MATERIAL	QTY	REMARKS
1.	PIPE	100 NB 80 NB 20 NB 15 NB			
2.	ELBOW 90	100 NB 20 NB 15 NB		02 01 01	
3.	FLANGE	CLS #300 100 NB 150 NB 80 NB		03 01	
4.	GLOBE VALVE, CLS #300	100 NB 150 NB	ASTM A216 WCB	2 1	
5.	ENLARGER/REDUCER	100x150 NB		1	
6.	TEE	100 NB 150x150x80 150x150x100		1 1 1	
6.	PCV, CLS #300	100 NB	ASTM A216 WCB	1	
7.	SAFETY VALVE	80X100 NB	ASTM A216 WCB	1	INLET: 3" X CLS#300 OUTLET: 1/2" X CLS#300
8.	PRESSURE GUAGE	4" DIAL		2	
9.	PRESSURE TRANSMITTER			1	
10.	MOISTURE SEPERATOR	100 NB	ASTM A216 WCB	1	
11.	TD3 TRAP	20 NB		1	
12.	PRESSURE TRANSDUCER			1	
13.	FORGED STEEL VALVE#800	20 NB 15 NB	ASTM A105	2 2	

SAKTHI INDUSTRIES

AMBATTUR, CHENNAI-600 098

CUSTOMER NAME:

PO REF. NO.:

TITLE
FABRICATION & ASSEMBLING OF PRS

DRAWN	MNK
CHKD.	GN
APPR.	VS

ALL DIMENSIONS ARE IN mm

REV.

0

SCALE

NTS

DRG. No.

SI-FO-PRS-4243-00

