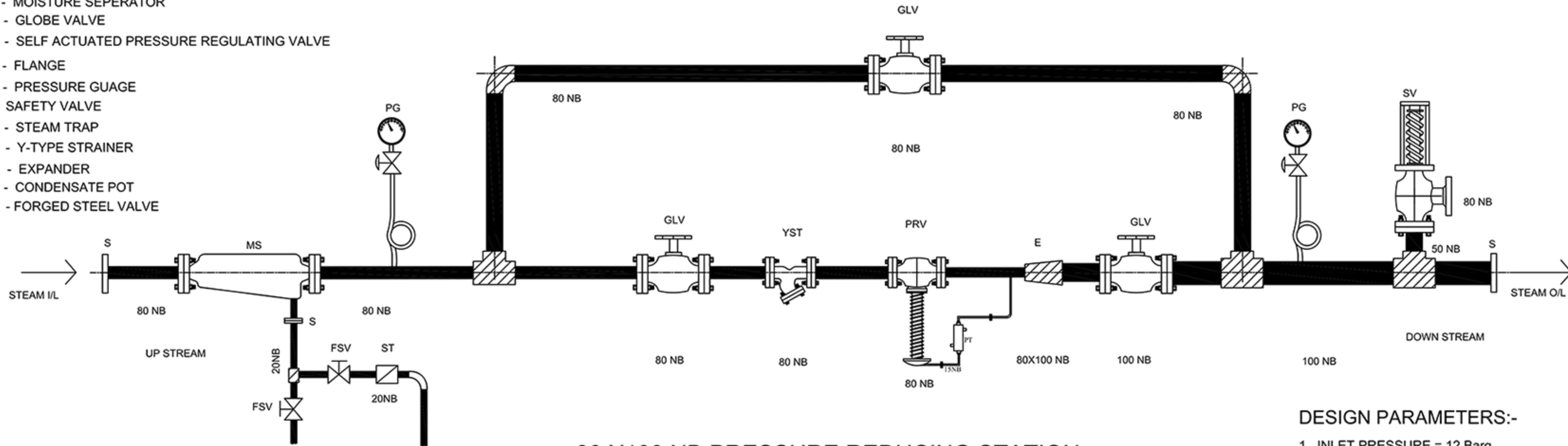


### LEGEND

- MS - MOISTURE SEPERATOR
- GLV - GLOBE VALVE
- PRV - SELF ACTUATED PRESSURE REGULATING VALVE
- S - FLANGE
- PG - PRESSURE GUAGE
- SV - SAFETY VALVE
- ST - STEAM TRAP
- YST - Y-TYPE STRAINER
- E - EXPANDER
- PT - CONDENSATE POT
- FSV - FORGED STEEL VALVE



### 80 X 100 NB PRESSURE REDUCING STATION

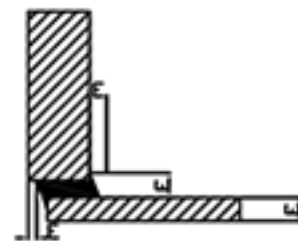
#### DESIGN PARAMETERS:-

1. INLET PRESSURE = 12 Barg
2. OUTLET PRESSURE = 6 Barg

MAXIMUM STEAM FLOW: 5000 Kg/Hr

#### DETAILS OF BENDS

DIAMETER OF PIPE	R	D
25	76.2	33.4
40	114.3	48.3
80	228.6	88.9
100	304.6	114.5



#### PIPE TO FLANGE WELD

DIAMETER OF PIPE	B	C	E	T	F
25	3.38	2.54	5.07	3.38	1.59
50	3.91	2.54	5.87	3.91	1.59
65	5.16	2.54	7.74	5.16	1.59
80	5.46	2.54	8.19	5.46	1.59
100	6.02	2.54	9.03	6.02	1.59

#### DETAILS OF FLANGES

DIAMETER OF PIPE	OUTER DIAMETER OF FLANGE	DIAMETER BOLT CIRCLE	NO OF BOLTS	DIAMETER OF BOLTS	THICKNESS OF FLANGE
25	107.9	79.40	4	16	14.30
50	152.4	120.60	4	19	19.00
65	177.80	139.70	4	19	22.20
80	190.50	152.40	4	19	23.80
100	228.60	190.50	8	19	23.80

#### BILL OF MATERIAL:-

S.NO	ITEM DESCRIPTION	SIZE	MATERIAL	QTY	REMARKS
1.	PIPE	100 NB 80 NB 20 NB 15 NB			
2.	ELBOW 90	80 NB 20 NB 15 NB		02 01 01	
3.	FLANGE	CLS #150 100 NB 80 NB CLS #300 80 NB 50 NB		03 03 02 01	
4.	GLOBE VALVE, CLS #150	80 NB 100 NB	ASTM A216 WCB	2 1	
5.	ENLARGER/REDUCER	80x100 NB		1	
6.	TEE	80 NB 100x100x80 100x100x50		1 1 1	
6.	PRV, CLS #150	80 NB	ASTM A216 WCB	1	
7.	SAFETY VALVE	50X80 NB	ASTM A216 WCB	1	
8.	PRESSURE GUAGE	4" DIAL		2	
9.	CONDENSATE POT			1	
10.	MOISTURE SEPERATOR	80 NB	ASTM A216 WCB	1	
11.	TD3 TRAP	20 NB		1	
12.	FORGED STEEL VALVE	20 NB 15 NB	ASTM A105	2 2	

## SAKTHI INDUSTRIES

AMBATTUR, CHENNAI-600 098

CUSTOMER NAME:

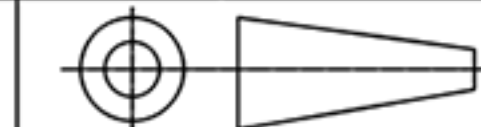
OFFER REF. NO.:

TITLE  
GENERAL ASSEMBLY OF PRS

DRAWN	MNK
CHKD.	GN
APPR.	VS

ALL DIMENSIONS ARE IN mm

REV. 0  
SCALE NTS



DRG. No. SI-SC-PRS-GA01-00